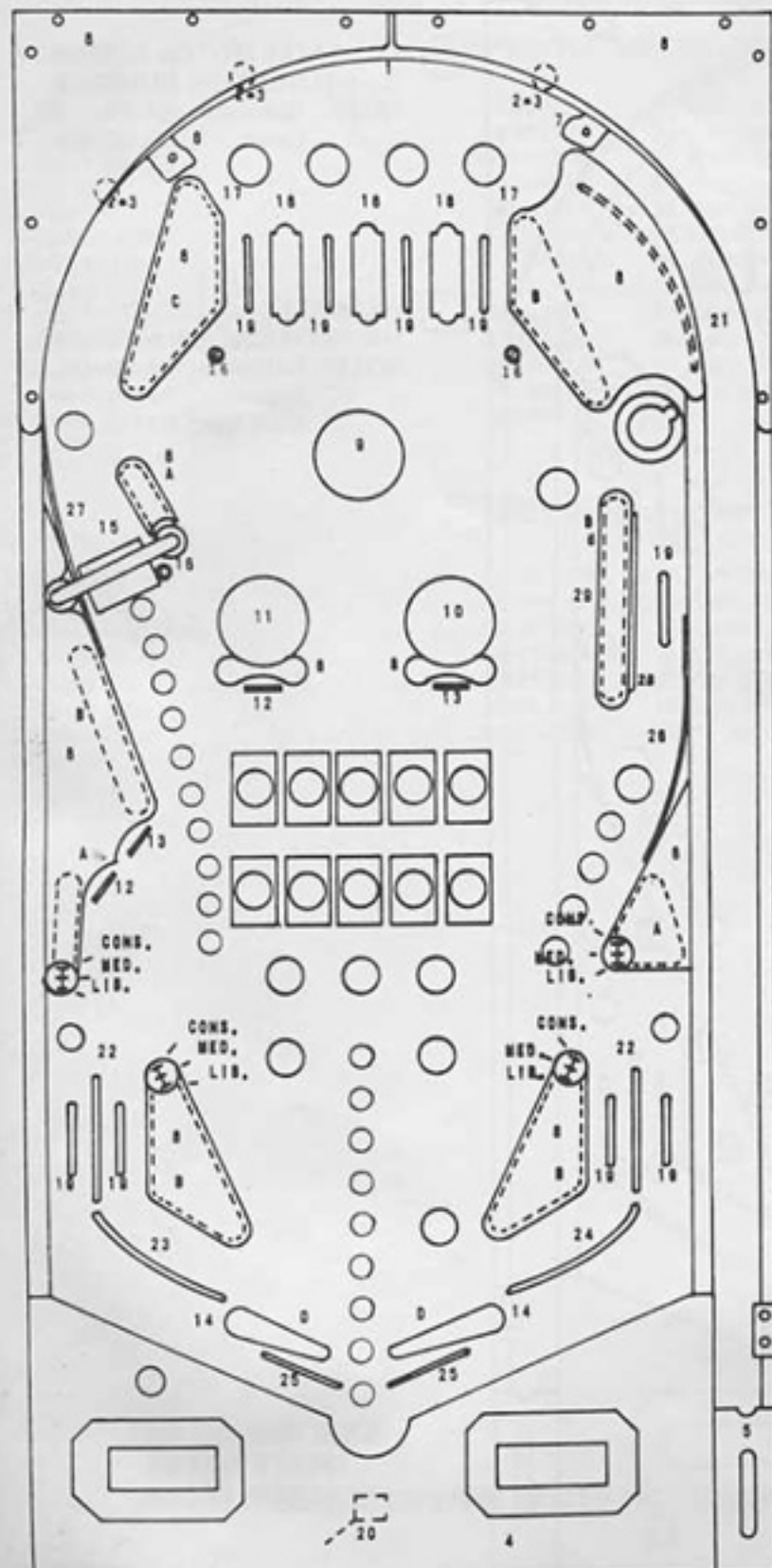




BACK GLASS  
G-408-33

WHEN ORDERING PART, SPECIFY PART NO. AND NAME OF GAME

# BLACK JACK



## RUBBER PARTS

Dimensions are inside diameters. Numbers in parentheses indicate quantity used, if in excess of one.

A. R-521-2	1-1/2" Dia.	(3)
B. R-521-4	2-1/2" Dia.	(5)
C. R-521-5	3" Dia.	(1)
D. R-406-3	Flippers	(2)
E. R-243	5/16" Dia.	(12)

## PANEL TOP PARTS

1. Arch Rail	M-1774
2. Rail Post (3)	C-907
3. Rail Post Cap (3)	C-908
4. Bottom Arch	P-5871-55
5. Shooter Guide	P-6359-21
6. Ball Gate (L)	A-1475-10
7. Ball Gate (R)	A-1475-9
8. Screened Plastics (Set)	M-1330-134
9. Thumper Cap	A-3713-30
10. Thumper Cap	A-3713-31
11. Thumper Cap	A-3713-32
12. Target Ass'y. (Red) (2)	ASE-2911-3
13. Target Ass'y. (Yel.) (2)	ASE-2911-21
14. Flipper & Shaft Ass'y.	AS-2214-24
15. Spinner Gate	AS-2250-50
16. Mini Post & Rubber (3)	AS-2836-1
17. Plastic Guide (2)	C-696-1
18. Plastic Guide (3)	C-695-1
19. Rollover Wire (9)	AS-2806
20. Outhole Wire	AS-2806-21
21. Guide Wire	M-121-64
22. Guide Wire (2)	M-121-18
23. Guide Wire	M-121-43
24. Guide Wire	M-121-44
25. Guide Wire (2)	M-121-53
26. Guide Rail Ass'y.	A-3032-22
27. Guide Rail Ass'y.	A-3032-23
28. Guide Wire	M-121-30
29. Guide Wire	M-121-47

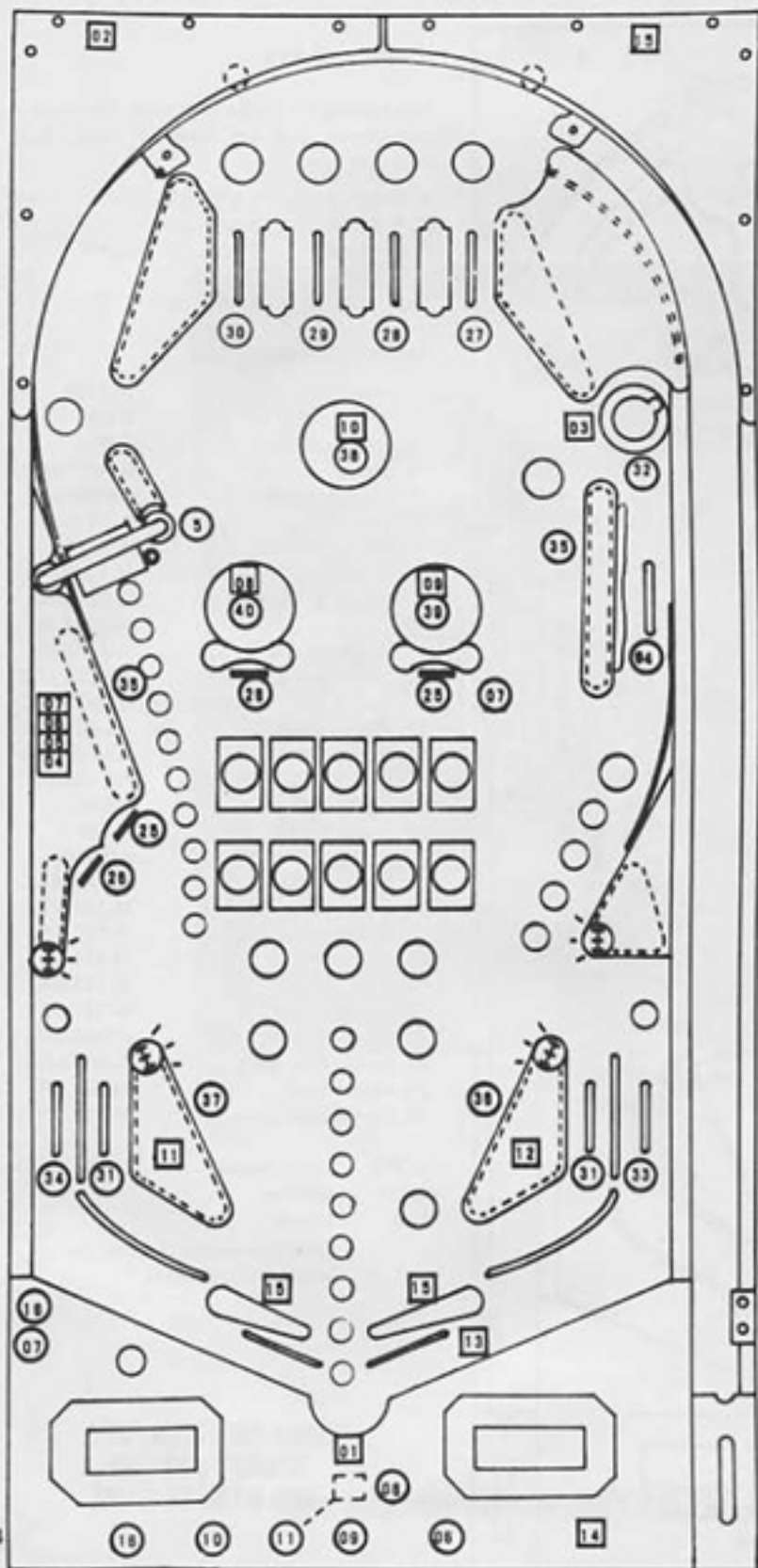
CONS. - Conservative

MED. - Medium

LIB. - Liberal

Indicates moveable posts for scoring adjustments.

**WHEN ORDERING PART,  
SPECIFY PART NO.  
AND NAME OF GAME**



○ INDICATES SWITCH ASSEMBLY IDENTIFICATION NUMBERS.

NOTE: Cabinet: 07, 16  
 Door: 06, 09, 10  
 11, 16

□ INDICATES SOLENOID IDENTIFICATION NUMBERS.

NOTE: Cabinet: 04, 05, 06, 07  
 Door: 14  
 Back Box: 02, 15

WHEN ORDERING PART,  
 SPECIFY PART NO.  
 AND NAME OF GAME

# BLACK JACK

## SWITCH ASSEMBLIES

4. Right Lane	AS-2911-9	29. Diamond Lane	AS-2911-9
5. Spinner	AS-2911-11	30. Club Lane	AS-2911-9
6. Credit Button	ASW-A10-46	31. L & R Flipper Feeder Lanes	AS-2911-9
7. Tilt (3)	A-2911-2	32. Beat Dealer Saucer	AS-2911-22
8. Outhole	AS-2911-7	33. Right Outlane	AS-2911-9
9. Coin III Right	A-2744-9	34. Left Outlane	AS-2911-9
10. Coin I Left	A-2744-9	35. 10 Point Rebound (2)	AS-2911-4
11. Coin II (Middle, if used)	A-2744-9	36. Right Slingshot	AS-2911-4
16. Slam (2)	ASW-A20-32	37. Left Slingshot	AS-2911-4
25. Change Dealer Target (2)	AS-2911-21	38. Center Thumper-Bumper	AS-2911-1
26. Change Player Target (2)	AS-2911-3	39. Right Thumper-Bumper	AS-2911-1
27. Heart Lane	AS-2911-9	40. Left Thumper-Bumper	AS-2911-1
28. Spade Lane	AS-2911-9		

## SOLENOID ASSEMBLIES

1. Outhole Kicker	AN-26-1200	8. Left Thumper-Bumper	AN-26-1200
2. Knocker	AR-26-1200	9. Right Thumper-Bumper	AN-26-1200
3. Beat Dealer Saucer	AO-27-1300	10. Center Thumper-Bumper	AN-26-1200
4. Chime 10	CN-31-2000	11. Left Slingshot	AN-26-1200
5. Chime 100	CN-31-2000	12. Right Slingshot	AN-26-1200
6. Chime 1000	CN-31-2000	13. Coin Lockout	FO-36-7000
7. Chime Extra	CN-31-2000	14. K1 Relay (Flipper Enable)	AO-25-500/34-4500

WHEN ORDERING PART, SPECIFY PART NO. AND NAME OF GAME