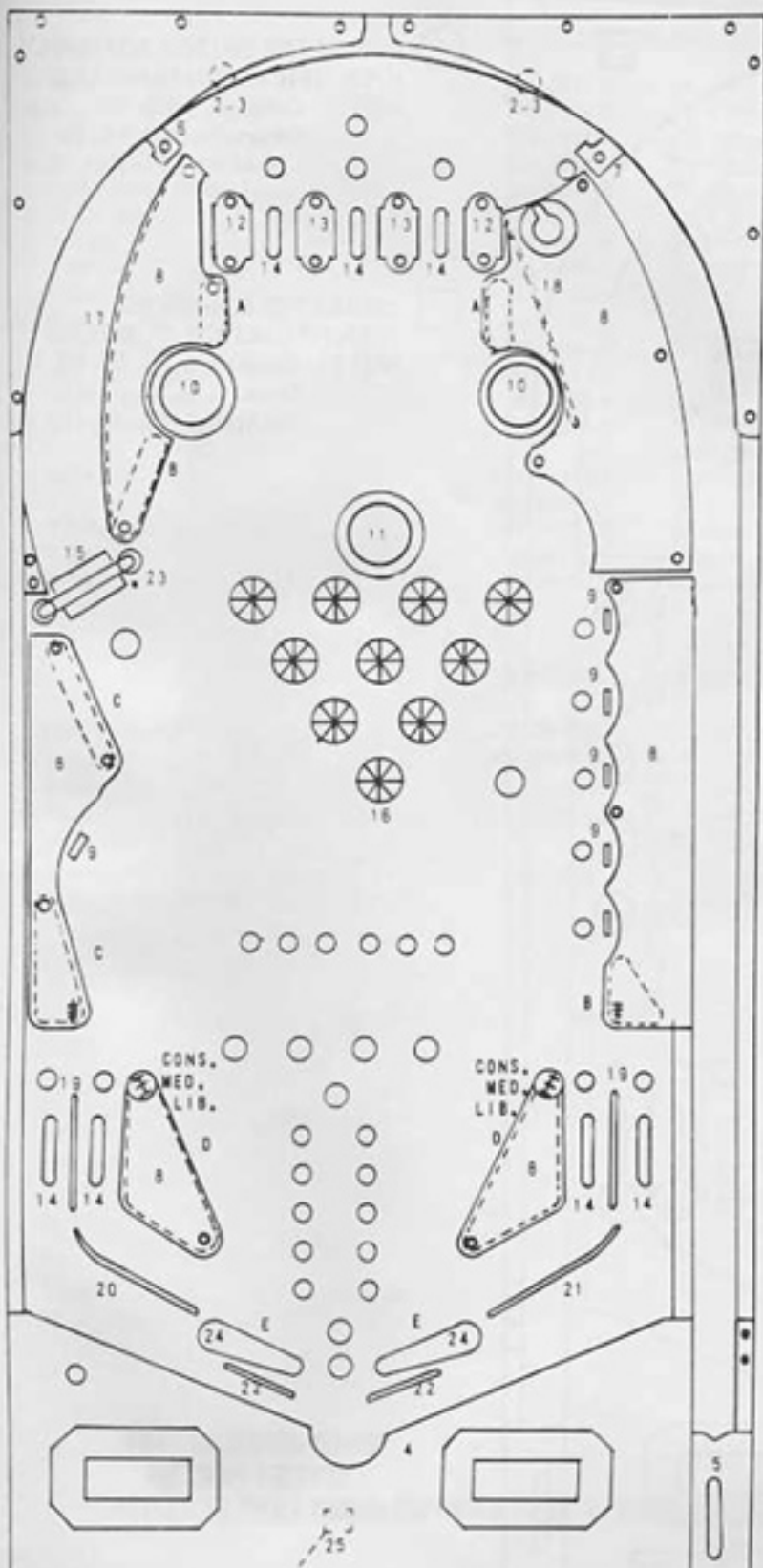




BACK GLASS
G-408-31

WHEN ORDERING PART, SPECIFY PART NO. AND NAME OF GAME

STRIKES & SPARES



RUBBER PARTS

Dimensions are inside diameters. Numbers in parentheses indicate quantity used, if in excess of one.

A. R-521	3/4" Dia.	(2)
B. R-521-1	1" Dia.	(2)
C. R-521-3	2" Dia.	(2)
D. R-521-4	2-1/2" Dia.	(2)
E. R-406-3	Flipper	(2)
F. R-243	5/16" Dia.	(21)

PANEL TOP PARTS

1. Arch Rail	M-1774
2. Rail Post (2)	C-907
3. Rail Post Cap (2)	C-908
4. Bottom Arch	P-5871-60
5. Shooter Gauge	P-6359-26
6. Ball Gate (L)	A-1475-10
7. Ball Gate (R)	A-1475-9
8. Screened Plastics	A-2890-134
9. Target Ass'y. (White) (6)	ASE-2911-20
10. Thumper Cap (2)	A-3713-17
11. Thumper Cap	A-3713-29
12. Plastic Guide (2)	C-935-1
13. Plastic Guide (2)	C-936-1
14. R.O. Wire & Bracket (7)	A-2806
15. Spinner Gate Ass'y.	ASE-2250-52
16. R.O. Button (10)	C-900
17. Ball Guide Wire	M-121-73
18. Ball Guide Wire	M-121-74
19. Ball Guide Wire (2)	M-121-18
20. Ball Guide Wire	M-121-43
21. Ball Guide Wire	M-121-44
22. Buffer Wire (2)	M-121-53
23. Minipost & Rubber	ASE-2836-1
24. Flipper & Shaft Ass'y. (2)	ASE-2214-24
25. Outhole Wire Ass'y.	ASE-2806-1

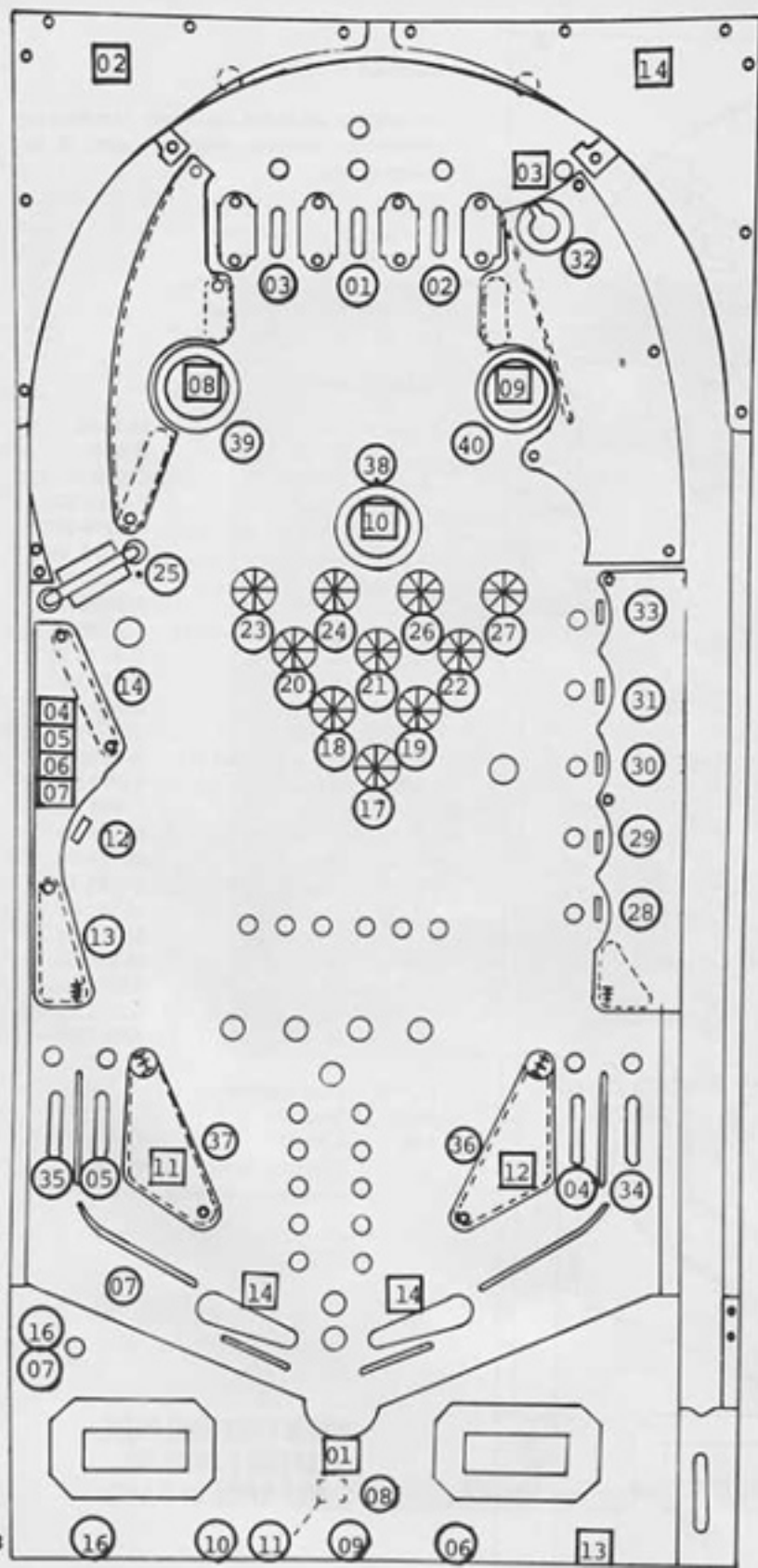
CONS. - Conservative

MED. - Medium

LIB. - Liberal

Indicates movable posts for scoring adjustments.

**WHEN ORDERING PART,
SPECIFY PART NO.
AND NAME OF GAME**



○ INDICATES SWITCH ASSEMBLY IDENTIFICATION NUMBERS.

NOTE: Cabinet: 07, 16
 Door: 06, 09, 10
 11, 16

□ INDICATES SOLENOID IDENTIFICATION NUMBERS.

NOTE: Cabinet: 04, 05, 06, 07
 Door: 13
 Backbox: 02, 14

**WHEN ORDERING PART,
 SPECIFY PART NO.
 AND NAME OF GAME**

STRIKES & SPARES

○ SWITCH ASSEMBLIES

1. Top "B" R.O. Lane	AS-2911-9	21. 5 Pin	AS-2911-25
2. Top "C" R.O. Lane	AS-2911-9	22. 6 Pin	AS-2911-25
3. Top "A" R.O. Lane	AS-2911-9	23. 7 Pin	AS-2911-25
4. Rt. Flipper Feeder Lane	AS-2911-9	24. 8 Pin	AS-2911-25
5. Left Flipper Feeder Lane	AS-2911-9	25. Spinner	AS-2911-11
6. Credit Button	ASW-A10-46	26. 9 Pin	AS-2911-25
7. Tilt (3)	AS-2911-2	27. 10 Pin	AS-2911-25
8. Outhole	AS-2911-7	28. "E" Target	AS-2911-20
9. Coin III (Right)	AS-2744-9	29. "R" Target	AS-2911-20
10. Coin I (Left)	AS-2744-9	30. "A" Target	AS-2911-20
11. Coin II (Middle)	AS-2744-9	31. "P" Target	AS-2911-20
12. 500 Side Target	AS-2911-20	32. Saucer	AS-2911-8
13. 10 Pt. Rebound	AS-2911-4	33. "S" Target	AS-2911-20
14. 50 Pt. Rebound	AS-2911-4	34. Right Outlane	AS-2911-9
15.		35. Left Outlane	AS-2911-9
16. Slam (2)	ASW-A20-32	36. Right Slingshot	AS-2911-23
17. 1 Pin	AS-2911-25	37. Left Slingshot	AS-2911-23
18. 2 Pin	AS-2911-25	38. Bottom Thumper-Bumper	AS-2911-1
19. 3 Pin	AS-2911-25	39. Left Thumper-Bumper	AS-2911-1
20. 4 Pin	AS-2911-25	40. Right Thumper-Bumper	AS-2911-1

□ SOLENOID ASSEMBLIES

1. Outhole Kicker	AN-26-1200	8. Left Thumper-Bumper	AN-26-1200
2. Knocker	AN-26-1200	9. Right Thumper-Bumper	AN-26-1200
3. Saucer	AO-27-1300	10. Bottom Thumper-Bumper	AN-26-1200
4. Tone 10		11. Left Slingshot	AN-26-1200
5. Tone 100		12. Right Slingshot	AN-56-1200
6. Tone 1000		13. Coin Lockout Door	FO-36-7000
7. Tone 10,000 (Extra)		14. K1 Relay (Flipper Enable)	AQ-25-500/34-5050

WHEN ORDERING PART, SPECIFY PART NO. AND NAME OF GAME